

# A.C. COMPRESSOR AND ALTERNATOR MOUNT

## 40-0312

### Flathead Ford/Mercury Early Wide Belt

1937-48 Car and 1937- 47 Truck

# OLD AIR PRODUCTS

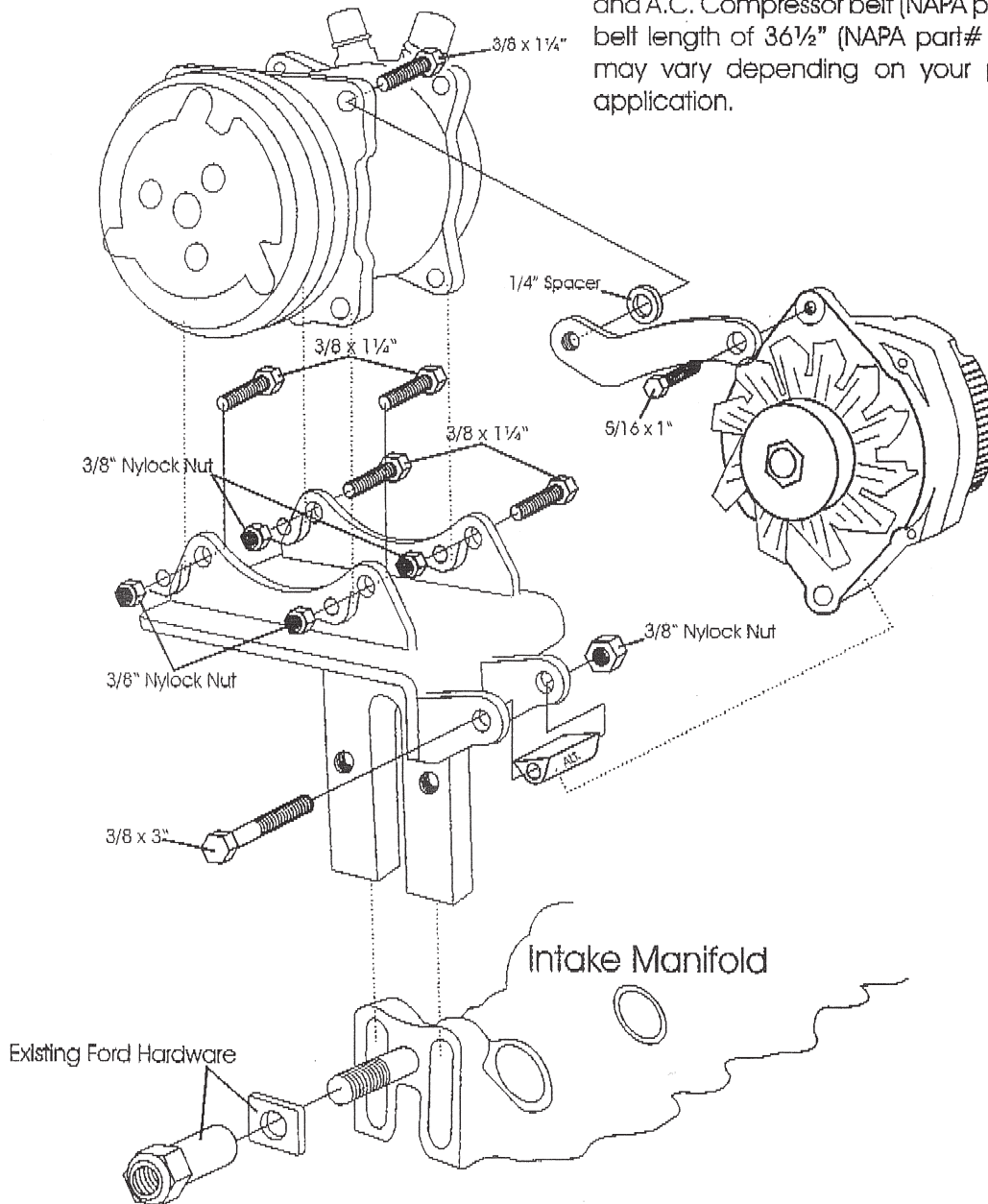
DIVISION OF COLD AIR PRODUCTS INC.

1201 Forum Way South - Fort Worth, TX 76140  
(817) 531-2665 - FAX (817) 531-3257

**COMPRESSOR NOTE:** This application will require the use of a 3/4" wide single groove clutch assembly for the Sanden Type A.C. Compressors. These Compressors and/or clutch assemblies are available from your favorite aftermarket air dealer.

**ALTERNATOR NOTE:** This application will require the use of a wide GM alternator pulley to accommodate the 5/8" width drive belt. This pulley is available from Speedway Motors or other street rod vendors.

We use a belt length of 61 1/4" in our shop for the alternator and A.C. Compressor belt (NAPA part# 22607), and a fan belt length of 36 1/2" (NAPA part# 22358). These lengths may vary depending on your pulley diameters and application.



# Flathead Water Pump Dimensions

